


SERVING THOSE[™] WHO PROTECT AND SERVE

Product catalog 2023



For more than 30 years, Santa Cruz Gunlocks, LLC has been a proud provider of equipment to the law enforcement community for mounting and securing firearms. We lead the industry in providing effective, easy-to-use gunlocks and accessories, and are constantly improving our products.

As an industry leader, we want to take this opportunity to provide some important information about the appropriate use and intended purposes of gunlocks - in particular, our mounted gunlock solutions.

Our mounting gunlock solutions serve three main purposes:

1. **Enhanced theft prevention.** In the event that a criminal gains access to the inside of a police vehicle, our mounting solutions provide an extra layer of security to aid in the prevention of misuse or theft of a weapon. While a gunlock and gun rack is not as secure as a gun safe, it is a powerful tool to prevent a weapon from falling into the wrong hands.
2. **Accessibility and ease of deployment.** While providing enhanced security, our solutions also are engineered to allow for rapid deployment of the secured firearm. In the event that the firearm must be deployed in an emergency or other critical situation, it can be done so quickly to provide safety for the officer and the public. In extreme situations, seconds can make a difference between lives lost and lives saved and rapid deployment of a safely secured firearm is critical.
3. **Providing firearm retention during collision.** In the event that an officer is involved in a collision, the gun rack prevents the firearm from becoming a projectile within the vehicle and possibly harming the officer or other vehicle occupants.

Santa Cruz works continuously to engineer our products to optimize accessibility and security. Examples of our long-standing commitment to product improvement include our patented shim protection and other safety features included in the SC-6 handcuff-style lock (which is an improvement to our SC-5 product), as well as our patented magnet protection included with our SC-1 and SC-1-AR clamshell style lock. Santa Cruz considers the safety and security of those who protect and serve as our top priority.

We would be happy to ensure that your department is using the proper fit and best option for your choice of firearm. Please feel free to call and speak with our professional staff at 603-746-7740, Monday through Friday 8am-5pm ET. We look forward to serving you.

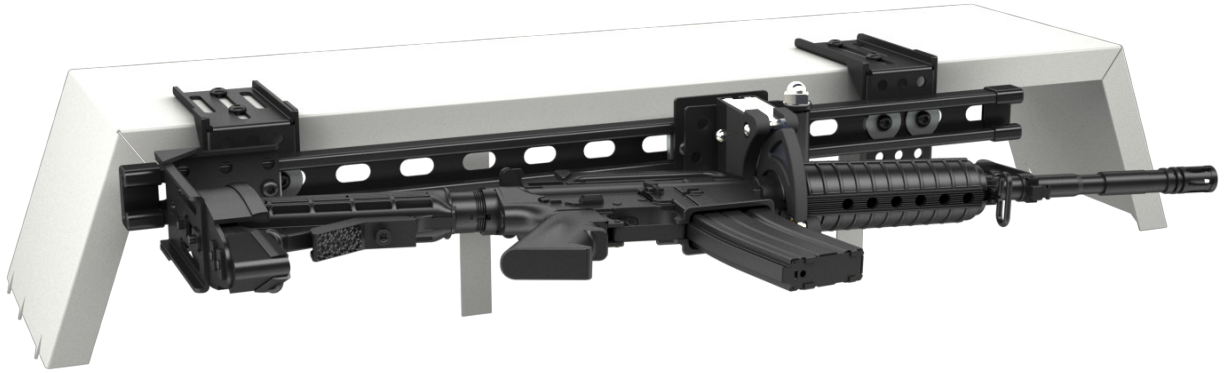


SC-917-5 utilizing the SC-503 24" slide rail for rapid adjustments pictured.



SC-929-5-K9 UNIVERSAL RAIL SYSTEM

The SC-929-5-K9 is a fully adjustable system designed for application in vehicles with a K-9 insert. This is the preferred choice for a K-9 officer who carries a firearm equipped with optics. This system works with all varieties of Santa Cruz Gunlocks.



SC-929-5-K9 UNIVERSAL RAIL SYSTEM ALTERNATE OPTION

The SC-929-5-K9 unit can also be mounted in the trunk of a sedan below the package deck. As police vehicles continue to get smaller and patrol officers are required to carry more equipment, space becomes a challenge. In this case our K-9 unit proves its versatility. Rather than having the system installed down through a K-9 kennel, it can be applied up and into the area below the package deck within the trunk of a sedan.



SC-920 SERIES

The SC-920 series has become one of our most popular platforms available. Its versatile and modular nature allows the end user to build the systems to meet their specific needs.



- The SC-9302 hinge creates the space needed to utilize a taller optic and works with any lock.
- System can be assembled on a bench for proper fitting prior to installation.
- Can be utilized in a dual set up and purchased with any combination of the gunlocks provided by Santa Cruz Gunlocks.

SC-920-5

OTHER SC-920 KITS AVAILABLE



SC-920-AR



SC-920-1



SC-920-B



SC-920-MR



SC-920-MS



SC-920-KSG



Saint



Purcy



Mauwi



Rex



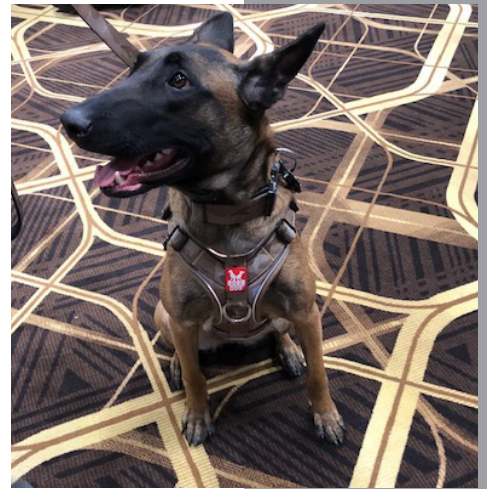
Ladybug



Riker



Shoko



Modani



Rozi



Karma



Zoey



Arson

SC-920-5

The SC-920-5 can be used horizontally and mounted to a flat surface. Pictured is a SC-920-5 mounted in a SWAT Van utilizing two SC-6 Universal locks.



Multiple SC-920-5 pictured mounted vertically in large response vehicle.



SC-934-5-A-K9

The SC-934-5-A-K9 is our K-9 version of the rapid-adjust design which allows the SC-6 universal gunlock to slide and lock into any position along the 24" mounting bar. This enables the user to quickly adjust the rack to accommodate a variety of firearms in a vehicle equipped with a K-9 insert.



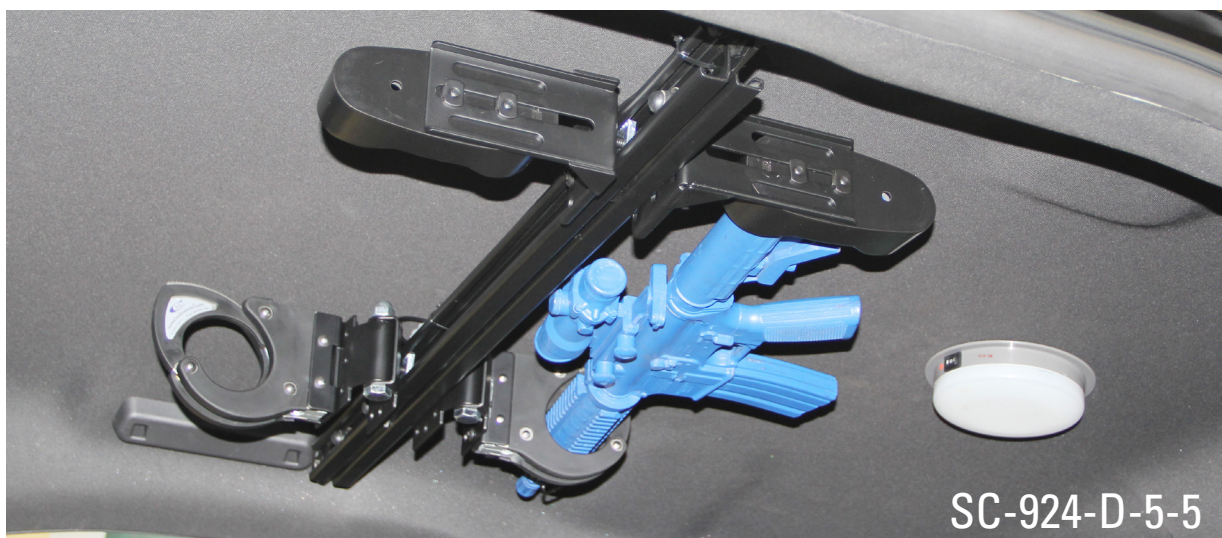
SC-934-5-A-MTL

The "MTL" stands for "Modified for Trunk Lid". This is a version of our rapid adjust overhead roll bar mounting system. The roll bar mounts are modified to fit against a flat surface. A threaded bar is supplied to pinch the trunk ribs making it universal for multiple sedan models. This provides another option for the trunk area.



SC-924 SYSTEM

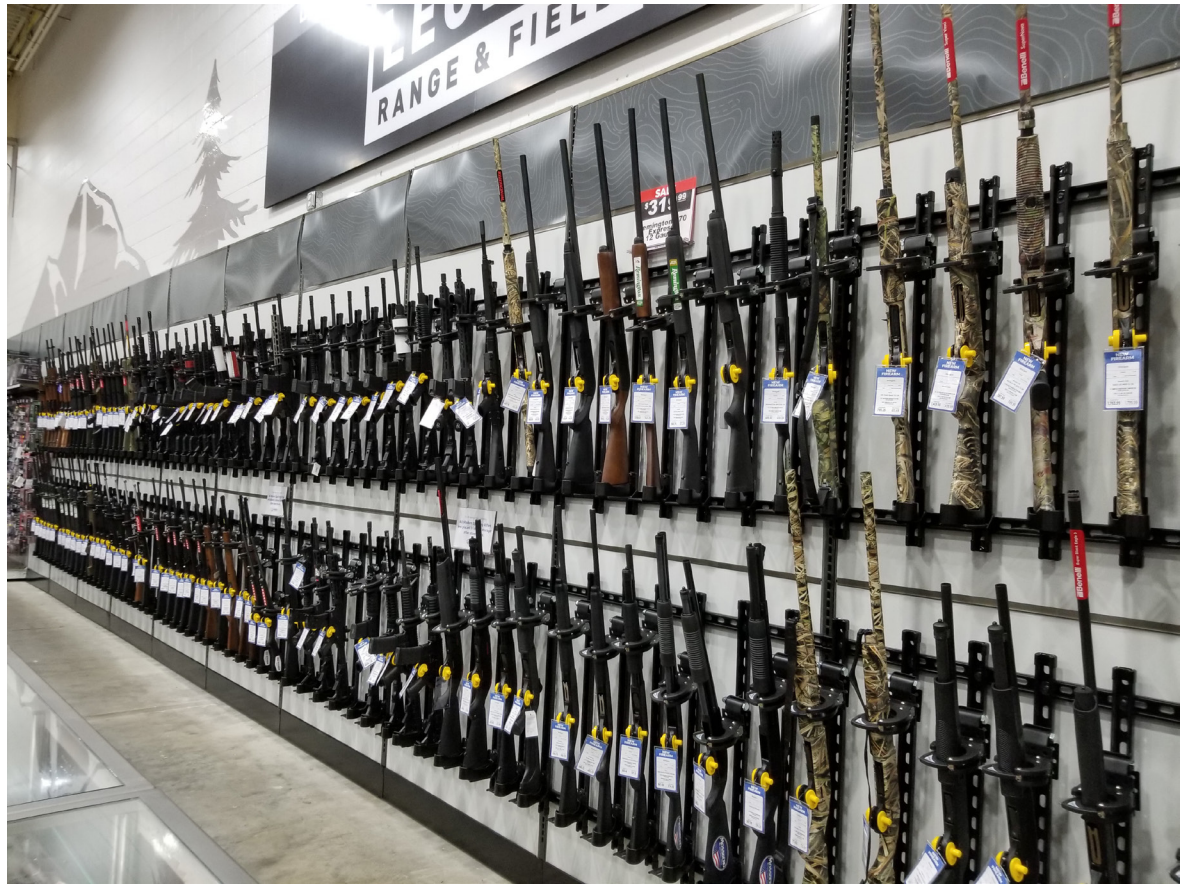
Our SC-924 system is designed to secure a firearm overhead in a vehicle that is not equipped with a partition wall or prisoner cage. This unit is universal in nature and can be secured in a variety of vehicles utilizing the grab handle locations or in some cases the coat hanger hooks. This system can be purchased with any of the gunlocks provided by Santa Cruz Gunlocks and can also be assembled as a dual unit.



SC-931 SERIES

The SC-931 series offers an alternative mounting option for vehicles without a partition wall or with limited space available for a more traditional mount. This kit is popular as a passenger side floor mount or in the rear cargo area of an SUV. This system can be configured for both a rifle or a shotgun and can be purchased with any Santa Cruz Gunlock available.





AVAILABLE ACCESSORIES



SC-6060
Rubber Insert for SC-6



SC-1201
Insert for SC-1



SC-1201-B
Rubber Insert for SC-1



SC-9311
Muzzle Cup



SC-9302
Mounting Hinge



SC-9903
L-Bracket



SC-1900
Adjustable Steel Butt Plate



SC-1901
Aluminum
Solid Butt Plate



In order to help fill your weapon retention needs, Santa Cruz Gunlocks offers a component based product line with unique versatility. Whether it be on a K-9 kennel or a single cell partition, in an unmarked sedan or on a fixed flat surface, we will find an option that provides a solution. If you have a firearm you are struggling to secure, give us a call. We are proud providers of top-of-the-line customer service, product expertise as well as quick delivery times. Thank you for considering Santa Cruz Gunlocks LLC!



Santa Cruz Gunlocks LLC. 450 Tyler Road • Webster, NH 03303 USA

General phone: (603) 746-7740 • Order phone: (800) 847-5428 • Fax: (603) 746-7764

E-mail: info@santacruzgunlocks.com • Web: www.santacruzgunlocks.com